



9 LCF-200

Description

- Input Range of $\pm 0.5g$ to $\pm 5.0g$
- Exceptional bias and scale factor.



The LCF-200 Series Flexure Suspension Fluid Damped Accelerometer is a $\pm 0.5G$ to $\pm 5G$ device designed for applications where high levels of shock and vibration are present. LCF units are characterized by excellent turn on repeatability and very low hysteresis.

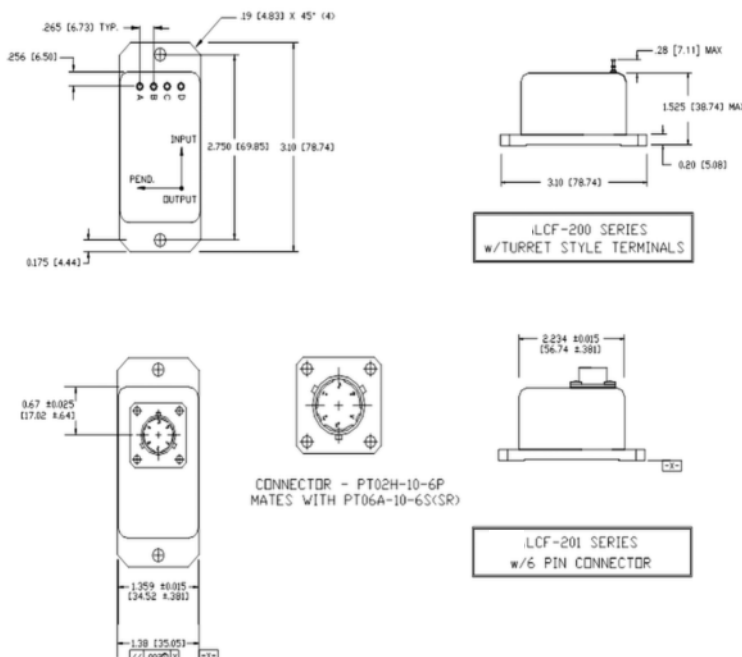
Features

- $\pm 0.5g$ to $\pm 5.0g$ Full Range
- Filtering 5 to 100 Hz Bandwidth
- Exceptional Bias & Scale Factor
- High Level $\pm V_{dc}$ Output
- 1,500g Shock Capability

Applications

- Geophysical Testing
- Railcar Acceleration Control
- Railcar Deceleration Control
- Ocean Buoy Acel Sensing
- Aircraft Stability Control
- Aircraft Flight Testing
- Vehicle Roadway Profiling

Outline Diagram



Pin Out

Pin A	+12 to +18 VDC
Pin B	-12 to -18 VDC
Pin C	Power/Signal Common
Pin D	Eo (Volts/g)

Performance Specifications

STATIC/DYNAMIC

Input Range, g:	±0.5	±1	±2	±5
Full Range Output (FRO -Note 1) VDC ±0.5%:	±5.00	±5.00	±5.00	±5.00
Scale Factor, Volts/g, nominal:	10	5	2.5	1 Scale
Factor Temp. Sensitivity (SFTS), PPM / °C maximum:	100	100	100	100
Natural Frequency, Hz nominal (Note 3):	30.00	30.00	30.00	30.00
Bandwidth (-3 dB), Hz nominal:	30.0	30.0	30.0	30.0
Output Axis Misalignment, ° maximum:	0.71	0.71	0.71	0.71
Pendulous Axis Misalignment, ° maximum:	0.71	0.71	0.71	0.71
Bias, g range:	±0.005	±0.005	±0.005	±0.005
Bias Temperature Sensitivity, µg / °C maximum:	50	50	50	50
Resolution and Threshold, µg maximum:	1	1	1	1

ELECTRICAL

Number of Axes:	1
Input Voltage Range, (VDC):	±12 to ±18
Input Current, mA, max:	15
Output Impedance, Ohms, nom:	100
Noise, grms, maximum:	0.001

ENCLOSURE

Weight oz:	4
Seal:	MIL-STD-202, Mtd. 112

ENVIRONMENTAL

Operating Temp Range:	-40°C to +80°C
Storage Temp Range:	-40°C to +90°C
Vibration grms:	20
Shock:	1000 g, 1 msec, ½ sine

- Notes: 1 - Full range is defined as "from negative full input acceleration."
 2 - Referenced to best-fit straight line independent of misalignment.
 3 - Output phase angle = -90°.

Order code

LCF-200-.5g	458200-001
LCF-200-1.0g	458200-004
LCF-200-2.0g	458200-002
LCF-200-5.0g	458200-003

The information provided herein is to the best of our knowledge true and accurate, it is provided for guidance only. All specifications are subject to change without prior notification.

Althen – Your expert partner in Sensors & Controls | althensensors.com

Althen stands for pioneering measurement and custom sensor solutions. In addition we offer services such as calibration, design & engineering, training and renting of measurement equipment.

Germany/Austria/Switzerland
info@althen.de

Benelux
sales@althen.nl

France
info@althensensors.fr

Sweden
info@althensensors.se

USA/Canada
info@althensensors.com

Other countries
info@althensensors.com